



Log Hauler

IP4424

INSTALLATION INSTRUCTIONS

Log Hauler IP4424

COMPONENTS

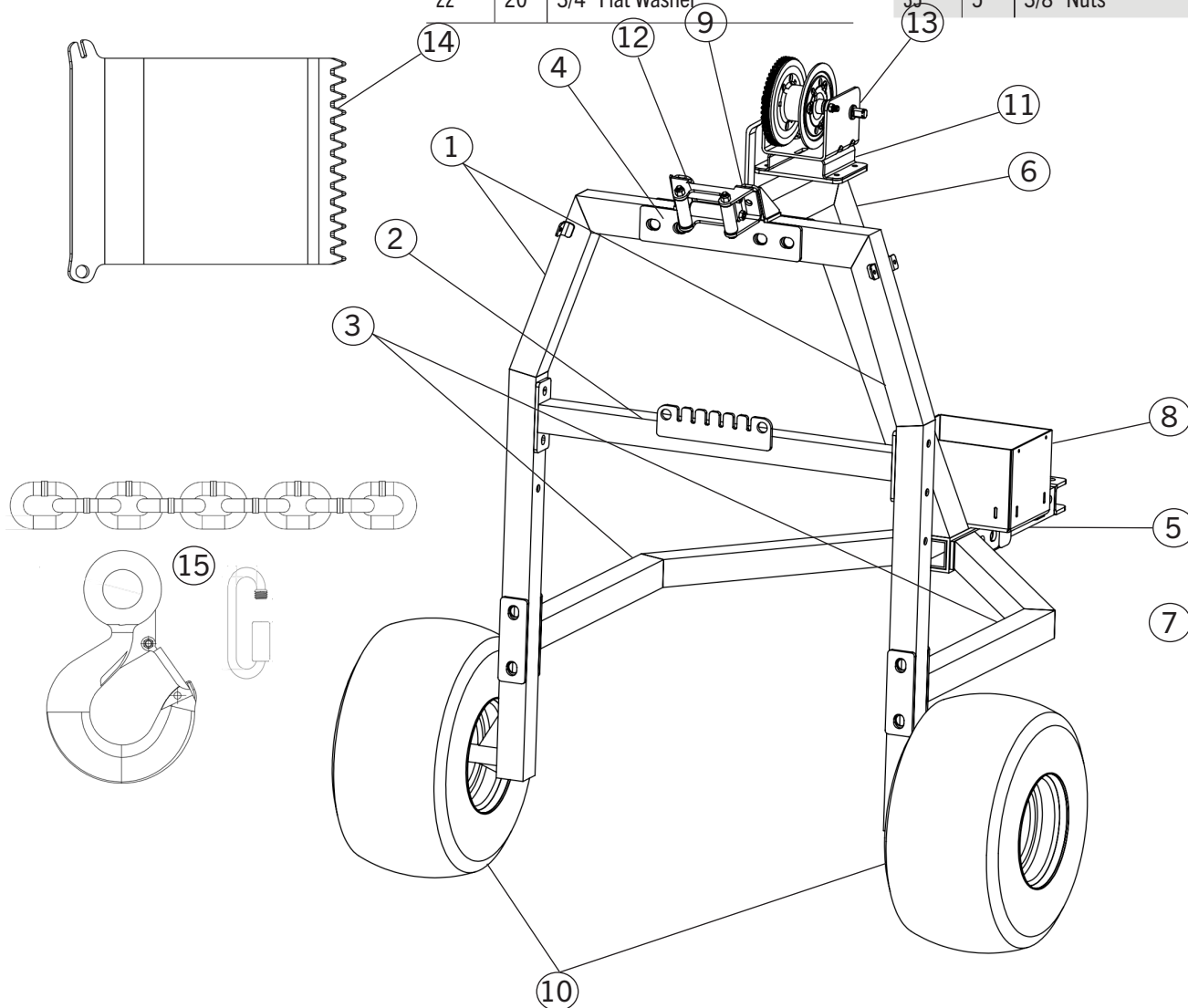


Please verify that all hardware and parts are included in your package. For replacement parts, visit www.motoalliance.com

Part#	Qty	Item Description
1	2	IP4424_Weld-1
2	1	IP4424_Weld-2
3	2	IP4424_Weld-3
4	1	IP4424_Weld-4
5	1	IP4424_Weld-5
6	1	IP4424_Weld-6
7	1	IP4424_Weld-7
8	1	IP4424-25, Battery Box
9	2	IP4424-26

Part#	Qty	Item Description
10	2	IP4424-27
11	1	IP4424-28
12	1	MA11605-A1 Full Roller Fairlead Assembly
13	1	IP4424-29
14	1	IP4424-30
15	1	IP4424-31
16	6	1/2" x 2.75" Length Bolt
17	2	1/2" x 3.5" Length Bolt
18	14	1/2" Flat Washer
19	8	1/2" Nylock Nut
20	8	3/4" x 3.75" Length Bolt
21	2	3/4" x 4.25" Length Bolt
22	20	3/4" Flat Washer

Part#	Qty	Item Description
23	10	3/4" Nylock Nut
24	4	1/4" x 0.5" Length Bolt
25	8	1/4" Flat Washer
26	4	1/4" Nylock Nut
27	4	1" Flat Washer
28	2	1/4" Diameter 1.25" Length Linch Pin
29	1	5/8" Hitch Pin with Clip
30	4	5/16" Bolts
31	4	5/16" Washers
32	4	5/16" Nuts
33	5	3/8" Bolts
34	5	3/8" Washers
35	5	3/8" Nuts



ASSEMBLY

1. Verify all components are present.



FIGURE 1



FIGURE 2

2. Connect both Weld-1 pieces with the Weld-2 component and the 1/2" x 2.75" bolts. Assemble hardware loosely.



FIGURE 4



FIGURE 3

3. Attach the Weld-3 pieces to the frame and secure with the 3/4" x 3.75" bolts. Refrain from fully tightening hardware.

Log Hauler IP4424

4. Connect the Weld-6 and Weld-7 pieces together with the 1/2" x 2.75" bolts.



FIGURE 5

5. Align the base section of Weld-7 with the frame pieces from step 3.

6. Connect Weld-4 to the top of the frame as shown in Figure 6 using 1/2" x 3.5" and 3/4" x 3.75" bolts.



FIGURE 6

7. Stack the wheels and use them to lift the tongue and stabilize the frame for the next section as shown.



FIGURE 7

Log Hauler IP4424

8. Attach Battery Box to the front of the frame with 1/4" x 0.5" bolts.



FIGURE 8

9. Secure roller fairlead to Weld-4 piece facing away from the frame.
10. Attach the wheels on both sides, sliding the large washer on first followed by the tire, small washer, and finally the hitch pin.

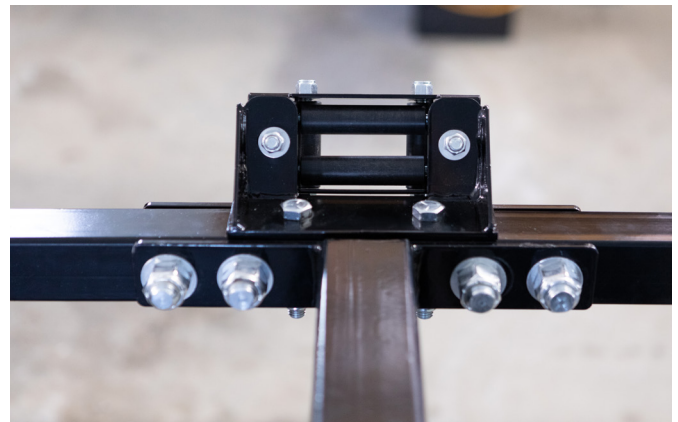


FIGURE 9

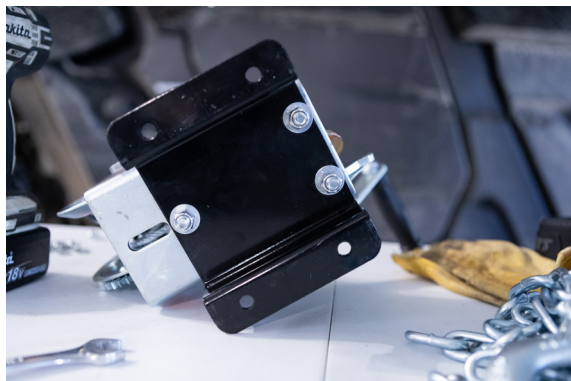


FIGURE 10



FIGURE 11

11. Attach the IP4424-28 plate to the hand crank and secure with hardware.

12. Place the plate and crank on Weld-6 and secure with hardware.

Log Hauler IP4424

13. Feed cable through the roller fairlead and attached the clevis hook. If you are using a winch, mount the winch to the base on the Weld-6 piece without the IP4424-28 plate Feed the rope through the fairlead.



FIGURE 12

14. Attach the chain to the skid plate and secure around teeth for ease of movement when not in use.



FIGURE 13



FIGURE 14

TO OPERATE

1. Back log hauler over cut tree.
2. Set the hand crank or winch to free spool, and pull out the cable to wrap around the tree.
3. Wrap the cable around the tree 1-2 feet from the cut end of log facing the machine and hook onto the cable on the top of the log.
4. Put the hand crank or winch back into gear and wind in the cable to raise the end of the log into the air.
5. Grab the skid plate and put it near the back edge of the log, roll the log or lift the log to place it on the skid plate.
6. Wrap the chain on the skid plate over the top of the log and use the threaded connector link to connect the loose end of the chain onto the connection point on the skid plate. NOTE: make sure that the chain is as tight as you can make it.
7. Take the loose end of the chain and wrap along the bottom of the log and hook a link on one of the slots on the top brace. Make sure this chain is also as tight as it can go.
8. Reverse the cable on the hand crank or winch so that the log is being supported only by the chain and not the winch cable.
9. Now you are ready to transport your logs!

TO REMOVE LOGS

1. Wind in the cable on the hand crank or winch to lift the log off the chain.
2. Remove the chain from underneath the log.
3. Slowly lower the log to the ground. Once on the ground, unhook the cable from around the log.
4. Disconnect the chain from one threaded connecting link on the skid plate.
5. Move the log hauler out of the way and roll the log off the skid plate.



FIGURE 15